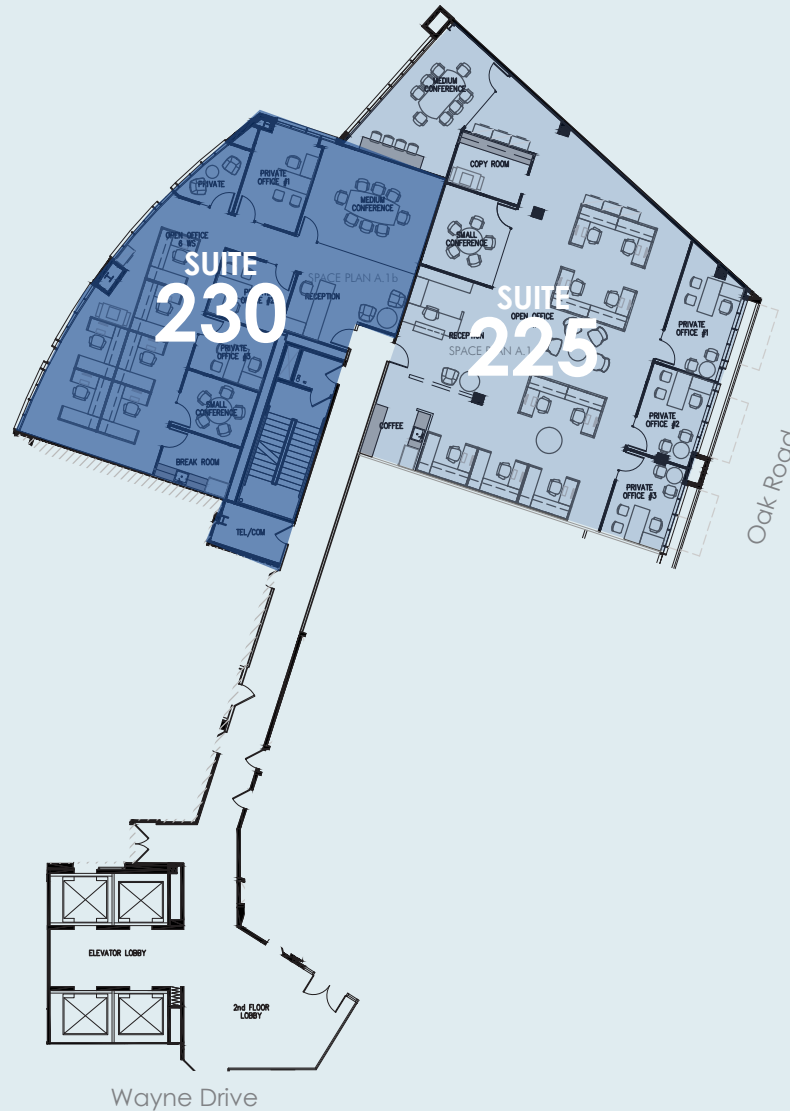


## Floor 2 (Two Tenants)

**Suite 225**  
3,621 RSF

**Suite 230**  
2,610 RSF

Available  
Now



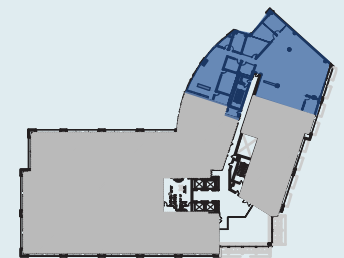
### SUITE 225

Private office	3
Workstations (6'x6')	9
Reception	1
SM conference	1
MD conference	1
Break area	1

### SUITE 230

Private office	3
Workstations (6'x6')	6
Reception	1
SM conference	1
MD conference	1
Break area	1

### Site Plan



### FOR LEASING INFORMATION

**Jim Peterson**  
+1 925 944 2164  
jim.peterson@am.jll.com  
License # 00886390

**Kevin Mechelke**  
+1 925 944 2142  
kevin.mechelke@am.jll.com  
License #: 01338917