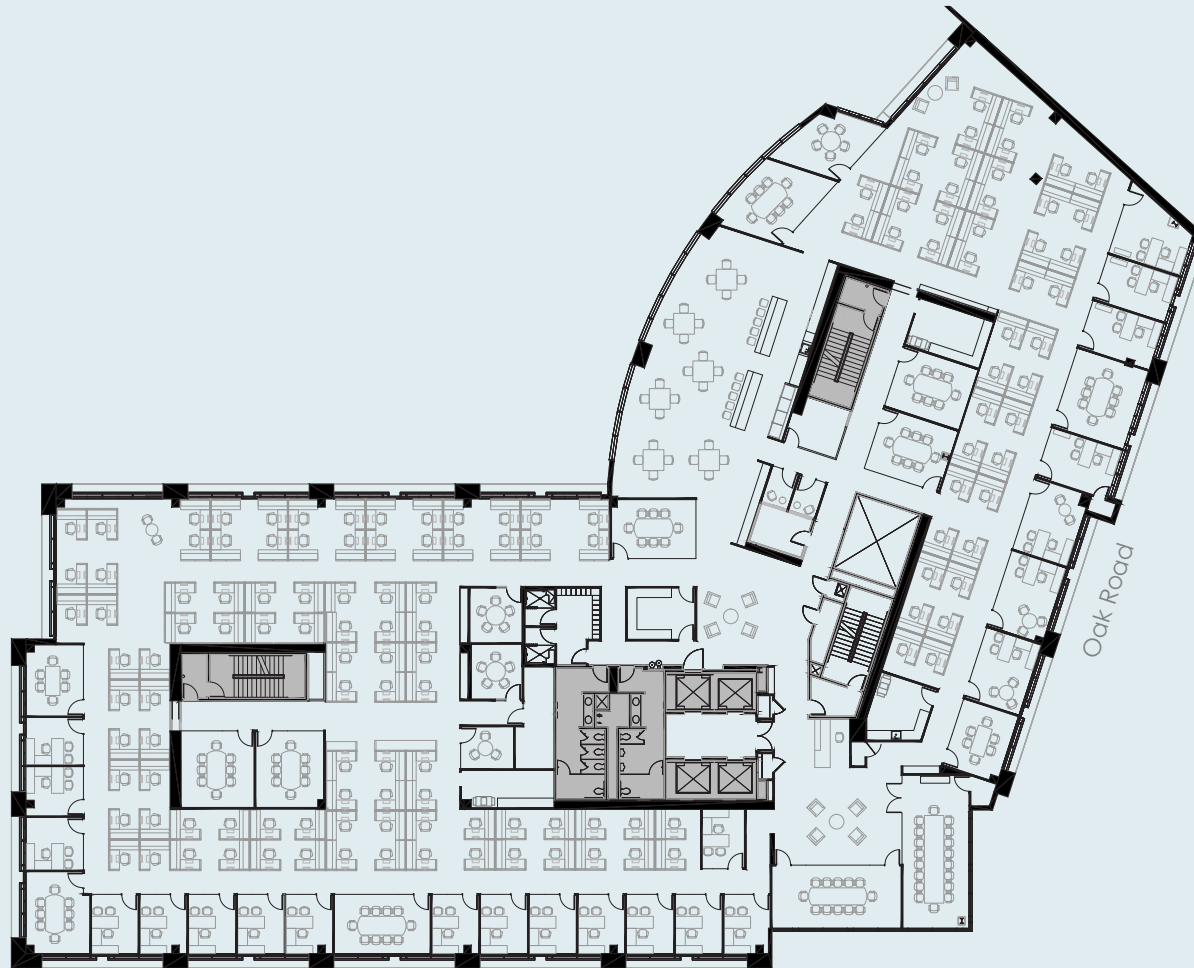


## Traditional Floor plan

Floors 3,4,5

Available  
Q1 2019



Wayne Drive

### PERSONNEL

Private office	23
Workstations	136
Reception	1
<b>Total headcount</b>	<b>160</b>

### MEETING ROOMS

LG conference	2
MD conference	12
SM conference	3

## FOR LEASING INFORMATION

**Jim Peterson**  
+1 925 944 2164  
jim.peterson@am.jll.com  
License # 00886390

**Kevin Mechelke**  
+ 1 925 944 2142  
kevin.mechelke@am.jll.com  
License #: 01338917